

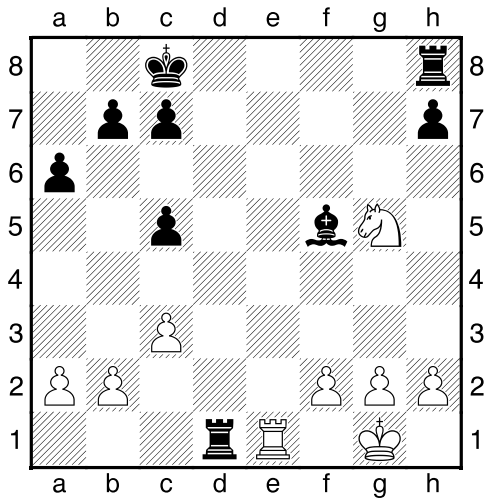
Chess tactical exercises #9

Sub1700 x equipos - Round 1

Find the blunder:

Which option is a blunder? Why? Analyze all the options.

1.Barbarito,D – Bargas, D

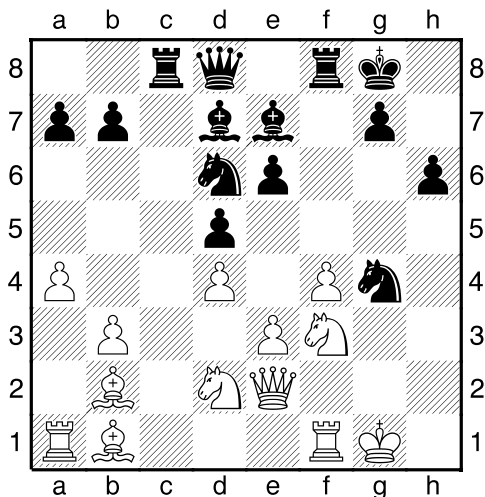


18. Rxd1 Rf8 19. f3 h6 20. Ne4 b6

Find the blunder:

- a) Ng3 b) Kf2 c) Re1

2.Villareal,H – Quesada,R

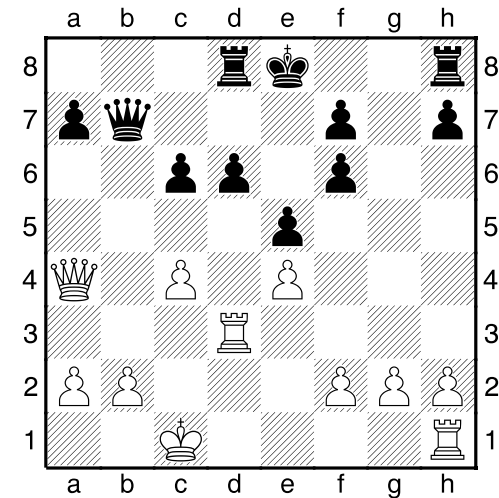


21. Ne5 Nxe5 22. dxe5 Nf5

Find the blunder:

- a) Qd3 b) Nf3 c) Bxf5

3.Gonzalez,M – Dujmovic,O

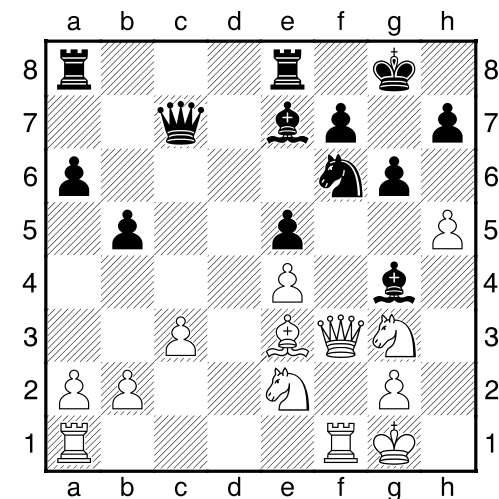


16... 0-0 17. Qd1 Qd7 18. Qh5

Find the blunder:

- a) ... Qe6 b) ... Rfe8 c) ... Kh8

4.Lapichello,P – Carboni,J

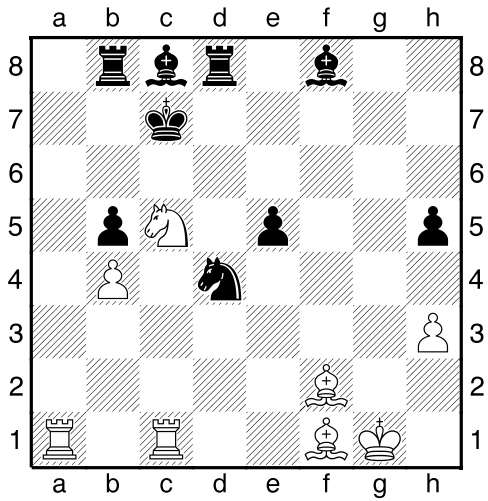


20. Qf2 Be6 21. hxg6 hxg6

Find the blunder:

- a) b4 b) Qf3 c) Bg5

5.Hernandez,S – Bracamonte,D



36...Kb6 37.Nd3 Bd6 38.Bg2

Find the blunder:

- a) ...Bxh3 b) ...Rg8 c) ...Bb7

Answers:

1.

21.Kf2 is the blunder since **21...Bxe4** wins the Knight. The pawn is pinned.

2.

23.Qd3 is the blunder since **23...Bc5** threatens the pawn in e3 and the queen can go to h4.

3.

There are 2 blunders. The only move that doesn't lose is **18...Qe6** since it gives Black an extra tempo. Black is threatening **19...Qxc4+** and also it is protecting (needs a tempo) the h6 square.

If **18...Rfe8 19.Qh6 Qg4** (any other move loses immediately) **20.Rg3** losing the Queen.

If **18...Kh8 19.Rh3 Qxh3** (any other move loses immediately) **20.gx3** losing the Queen.

4.

22.Bg5 is the blunder since **22...Ng4** wins a piece.

5.

There are 2 blunders here.

38...Rg8 loses a piece: **39.Rc6+ Kb7 40.Rxd6+**.

And **38...Bxh3** loses the Bishop. **39.gxh3**.

Games :

http://www.ajedrezcsm.com.ar/sub_1700_x_equi_pos.htm

Download more chess tactical exercises from:

<http://community.corest.com/~riq/chess.html>