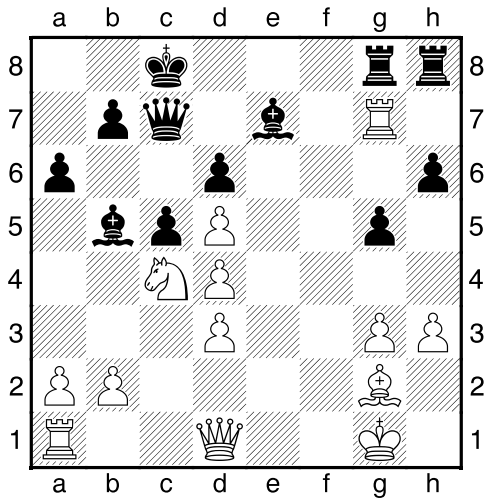


Chess tactical exercises #10 Sub1700 x equipos - Round 2

Find the blunder:

Which option is a blunder? Why? Analyze all the options.

1. Famularo, G – Bracamonte, D

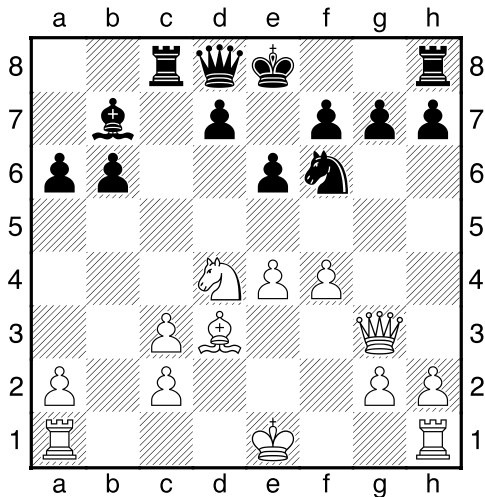


25. Rf7 Be8 26. Qg4+ Kb8

Find the blunder:

- a) Rff1 b) Rf2 c) Rf5

2. Weil, A – Icardi, U

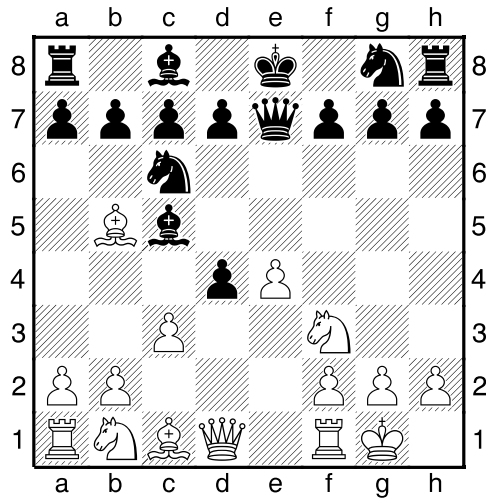


13. c4 g6 14. e5 Ne4

Find the blunder:

- a) Qf3 b) Bxe4 c) Qh3

3. Barbarito, D – Gonzales, J



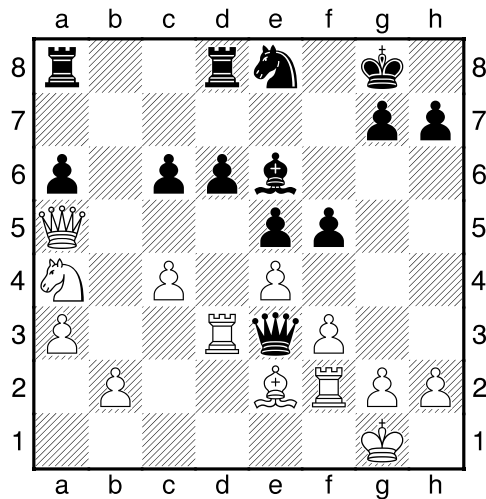
6... dxc3 7. e5 a6 8. Bxc6 dxc6

9. Bg5

Find the blunder:

- a) ...f6 b) ...Qf8 c) ...Qd7

4. Cosentino, D – Campos, H



22... Qa7 23. c5 fxe4 24. fxe4

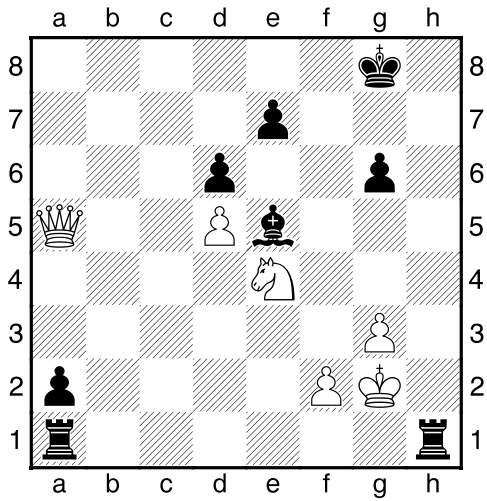
Find the blunder:

- a) ...Bc4 b) ...Nf6 c) ...d5

Find the best move:

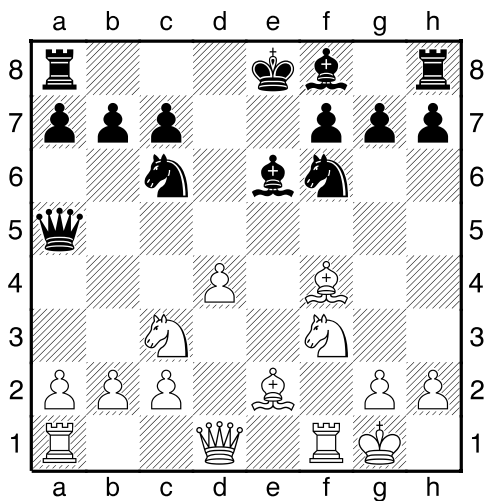
Which is the best move for the side to play. Why?

5.Valdes, O – Uzal, M



White to play and draw

6.Angulo,C – Bargas,D



9...0-0-0 10.a3

Black to play

Answers:

1.

27.Rf5 is the blunder since **27...Bd7** pins the Rook.

2.

15.Qf3 is the blunder. But did you find why?

15.Qf3 Qh4+ 16.g3 Nxf3 17.Qxf3 Qxf3+

18.hxf3 Bxf1 Winning the exchange.

3.

9...Qf8 is the blunder because **10.Qd8#**

9...f6 is not a blunder. Let's see why:

9...f6 10.exf6 gxf6 11.Re1 pinning the Queen but after **...cxb2** Black will exchange his Queen for 2 Rooks.

4.

24...Bc4 is the blunder because **25.Rdf3** threatens **26.Rf8#** and **26.Bxc4**.

5.

41.Qd8+ Kf7 42.Ng5+ Kf6 43.f4 Do you see the threat? White will mate in the next one with **Qf8#**, so Black can't queen the «a» pawn and should give White a perpetual check. Any kind of sacrifice won't win the game for Black.

If **41..Kg7** or **41...Kh7** White can also force a draw with perpetual check.

6.

10...Nxd4 11.Nxd4 Rxd4 winning a pawn. If White retakes then... **12.Qxd4 Bc5** pinning the Queen

Games :

http://www.ajedrezcsm.com.ar/sub_1700_x_equi_pos.htm

Download more chess tactical exercises from:

<http://community.corest.com/~riq/chess.html>