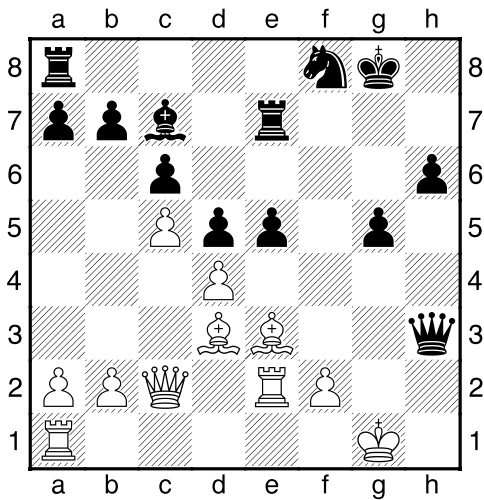


## Chess tactical exercises #12 Sub1700 x equipos - Round 3

### Find the blunder

Which option is a blunder? Why? Analyze all the options.

#### 1. Romero, F – Campos, H

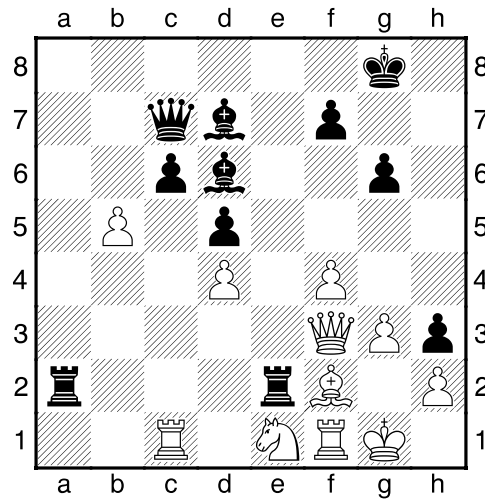


22. Bf5 Qh5 23. f3 exd4

Find the blunder:

- a) Bxd4    b) Bg4    c) Bc1

#### 2. Murillo, L – Martinez, E (1<sup>st</sup> part)

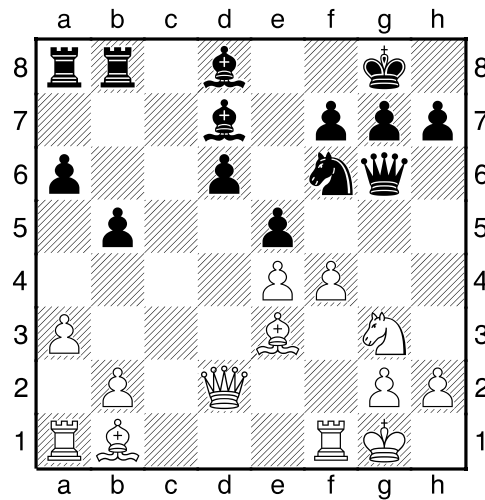


30... c5 31. dxc5 Bxb5 32. Nd3

Find the blunder:

- a) Bxd3    b) Rxf2    c) Bf8

#### 4. Bogado, J -Dujmovic, O

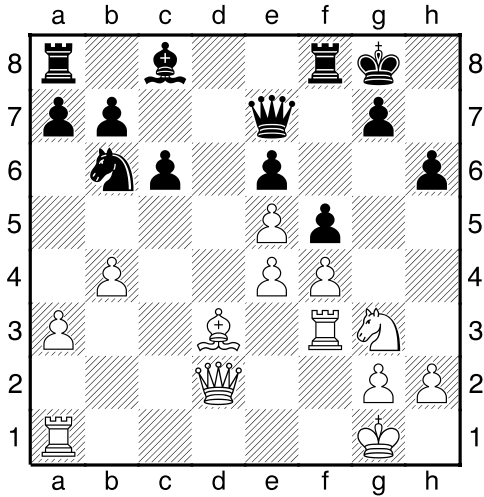


21... Ng4 22. f5 Qf6 23. Kh1

Find the blunder:

- a) Qh4    b) Bb6    c) Nxe3

4. Uzal, M – Urciuoli, A



20...c5 21.Nh5 cxb4 22.exf5

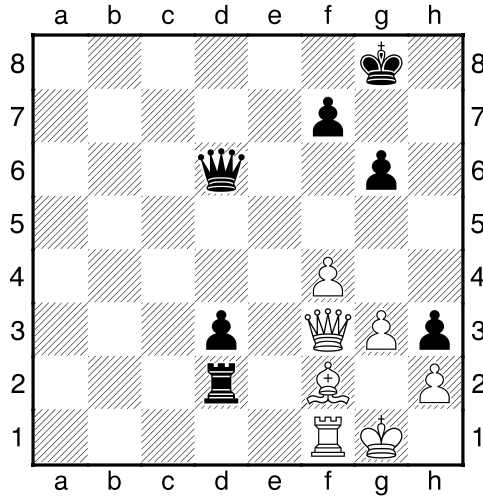
Find the blunder:

- a) ...exf5    b) Qc5+    c) Qh4

Find the best move:

Always look for the best move: it could be a mating line or a move that just wins a pawn, or a move that lets you be in game.

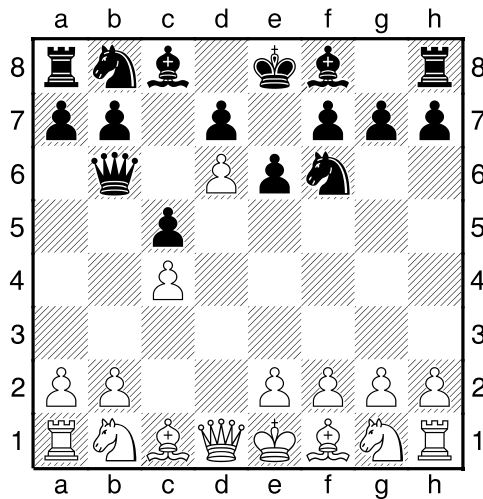
5. Murillo, L – Martinez, E (2<sup>nd</sup> part)



38.Rd1

Black to play (and win).

6. Valdes, O – Gonzalez, M



5.Nc3 a6 6.Bf4 Qxb2

White to play

**Answers:**

**1.**

White is already lost, but with **24.Bg4** White loses immediately because **24...Qe8** Black threatens the Bishop in e3 with 3 pieces and it can't move because the Rook is pinned.

**2.**

Right, **32...Bxd3** is the blunder because after **33.cxd6** the Black Queen must move and then White takes the Bishop without problem.

**32...Bf8** seems to be a passive move, but puts the Bishop in a safe place.

**32...Rxf2** is also a good move for Black. **33.Nxf2 Bxc5** and White can't pin the Bishop, both of his Rooks are threatened and the King is being attacked.

**3.**

The blunder is **23...Ba6**. **24.Bg5** and the Queen is trapped. Black needs to sacrifice his Bishop to save his Queen with **24...Be3**

**4.**

The blunder is **22...Qh4**, but did you find why ?  
**23.Nf6+ gxf6 24.Rh3 Qxh3 24.gxh3** and White is much better.

**5.**

All the White moves are forced:

**38...Rxd1+ 39.Qxd1 Qd5 40.Kf1 Qh1+ 41.Bg1**

**Qg2+ 42.Ke1 Qxg1+ 43.Kd2 Qxh2+** and White can't stop the the "h" pawn.

**6.**

Black took a poisoned pawn. **7.Na4** and White threatens the Queen and also **Nb6**. This is a possible line:

**7.Na4 Qb4+ 8.Bd2 Qxc4 9.Nb6 Qe4 10.Nxa8**

**Games :**

[http://www.ajedrezcsm.com.ar/sub\\_1700\\_x\\_equipos.htm](http://www.ajedrezcsm.com.ar/sub_1700_x_equipos.htm)

**Download more chess tactical exercises from:**

<http://community.corest.com/~riq/chess.html>