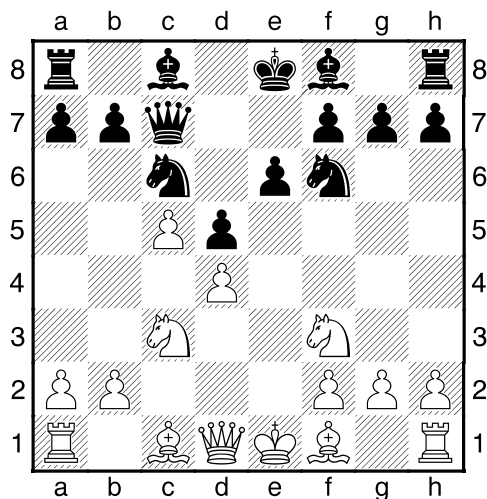


Torneo Superior Tactical Exercises

Find the best move.

It could be a winning move, a move that lets you continue to have the advantage or a move that lets you continue to be in the game.

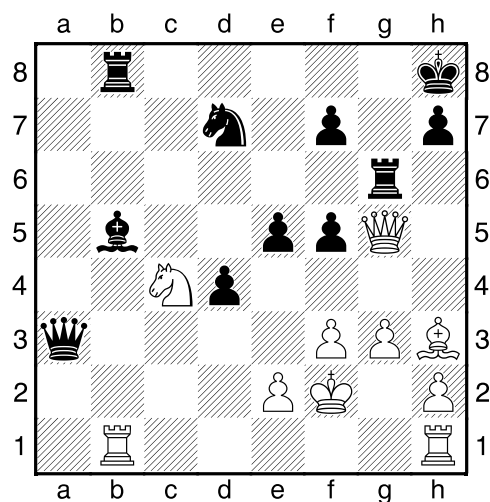
1. Cereijo, N. - Petruzzella



8.Nb5 Qb8 9.g3 Bd7

White to play

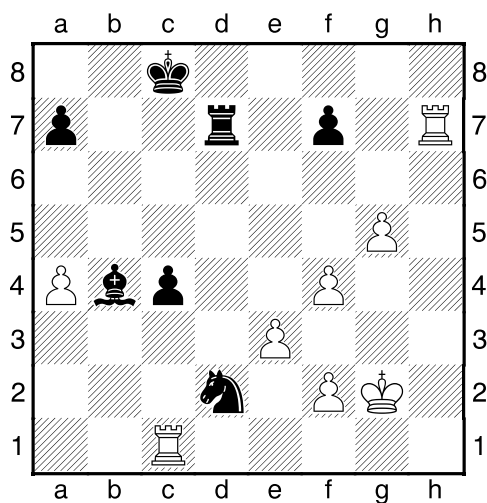
3. Franchi, G – Bracamonte, D



31...Bxc4 32.Rxb8+ Nxb8 33.Qd8+

Black to play

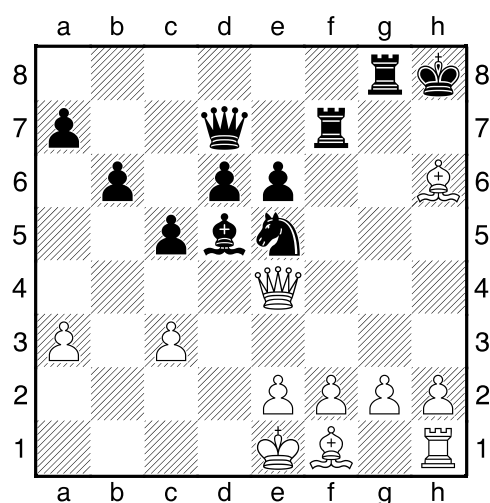
2. Gómez, F. - Cereijo, N.



30...c3 31.f5 Nb3 32.g6

Black to play

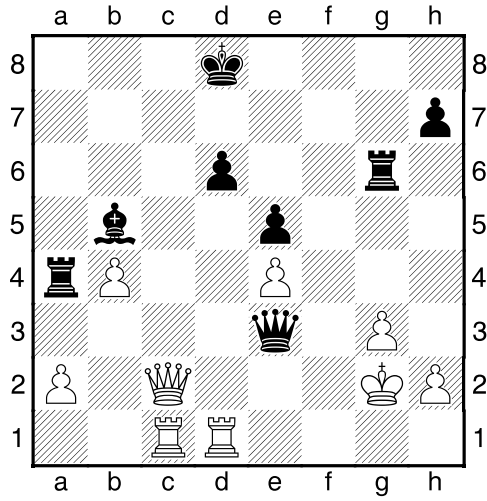
4. Roque, F – Bracamonte, D



23.Qh4 Ng6 24.Qh5 Qb5

White to play

5. Cereijo, N. - Rojo Lynch, E



29...Bd7 30.Qc4 Rxb4 31.Qxb4

Black to play. Mate in 6

Respuestas:**1.**

10.Bf4 Qc8 11.Nc7+

2.

32...fxg6 33.fxg6 Rd6.

3.

33...Kg7 34.Kg2 Nc6 35.Qd7 Bxe2

36.Qxf5 Bd3 37.Qh5 Qa2+ 38.Kg1

e4 39.f4

4.

25.Bg5+ Rh7 26.Bf6+ Rgg7 27.Qxg6

Kg8 28.Bxg7 Rxg7 29.Qc2 c4

5.

31...Bh3+ 32.Kxh3 Rh6+ 33.Kg2

Qe2+ 34.Kg1 Qxh2+ 35.Kf1 Rf6+

36.Ke1 Qf2#

Games:

<http://www.ajedrezcsm.com.ar/Superior.htm>