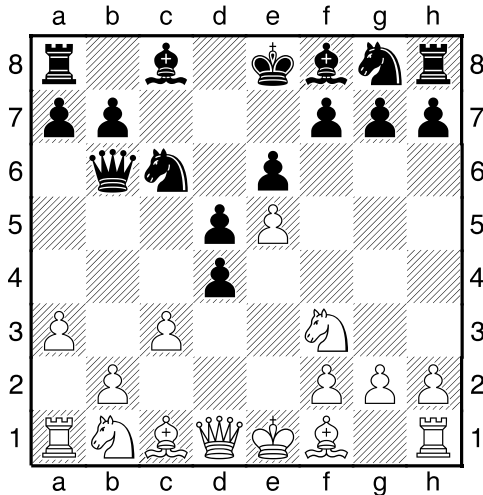


TONC 4 - Round 3 Chess tactical exercises

Find the best move:

Always look for the best move: it could be a mating line or a move that just wins a pawn.

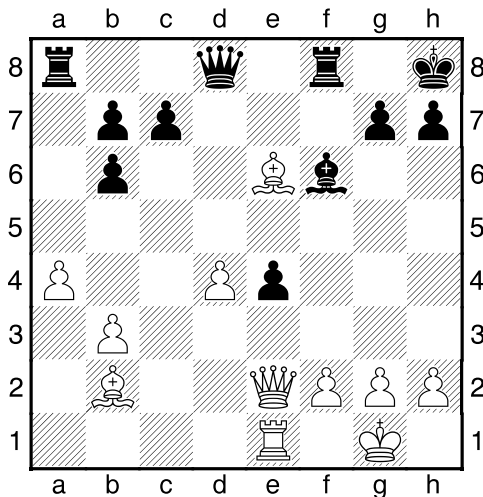
1. Aliens243 - Ringlord



7. cxd4 Nge7 8. Bd3 Nxd4

White to play

2. Rara Rosa - Igrino



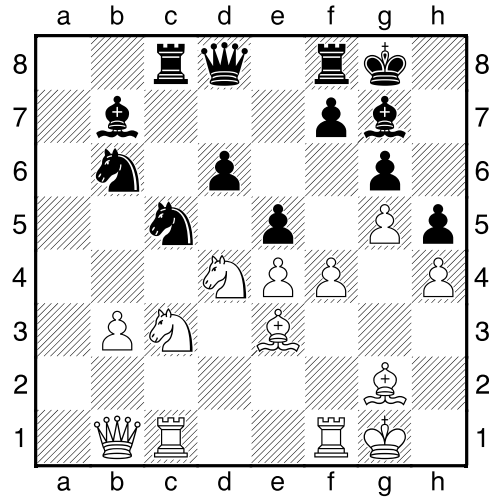
20... Bxd4 21. Bxd4 Qxd4 22. Qxe4

Black to play and mate in 3

Find the blunder:

Which option is a blunder? Why?

3. littlefish - PircAlert

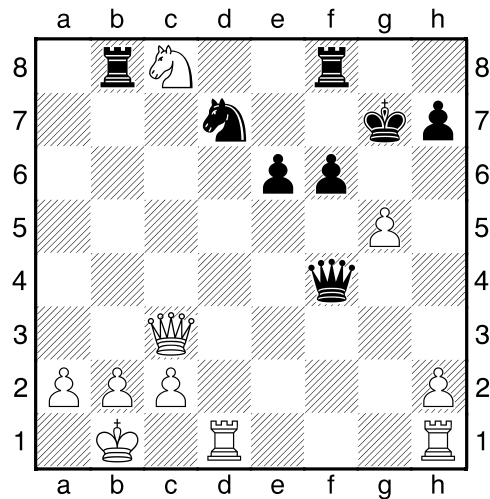


23. Ndb5 exf4 24. Bxf4 Ne6

Find the blunder:

- a) Nxd6 b) Bxd6 c) Be3

4. Kalten - Proloy



22... Ne5 23. Rhf1 Rfxc8 24. Qxc8

Find the blunder:

- a) ...Rxc8 b) ...Qxf1

Answers

1.

9. **Nxd4** and black can't retake it because if:
9... **Qxd4** 10. **Bb5+** Nc6 11. **Qxd4**
winning the Queen

2.

22... **Qxf2+** 23. **Kh1** Qf1+ 24. **Rxf1**
Rxf1#

3.

Nxd6 seems to be the blunder:

25. **Nxd6** **Nxf4** 26. **Nxc8** **Nxg2** 27. **Kxg2**
Qxc8 [and white is about to lose the Knight in
c3] 28. **Qd3** **Ba6**

Taking with the bishop is not as bad as taking
with the Knight, but is not the best move:

25. **Bxd6** **Rxc3** 26. **Rxc3** **Bxc3** 27. **Bxf8**
Qxf8 28. **Nxc3** **Qc5+** 29. **Kh2** **Qxc3**

And Fritz thinks **Be3** is the best move and
evaluates the position with: 0.79

4.

Black seems to be already lost, but ...**Qxf1**
accelerates the end.

24... **Qxf1** 25. **Qc7+**

Games:

[http://www.chessninja.com/cgi-
bin/ultimatebb.cgi?ubb=get_topic;f=3;t=000196](http://www.chessninja.com/cgi-bin/ultimatebb.cgi?ubb=get_topic;f=3;t=000196)

Find more tactical exercises:

<http://community.corest.com/~riq/chess.html>