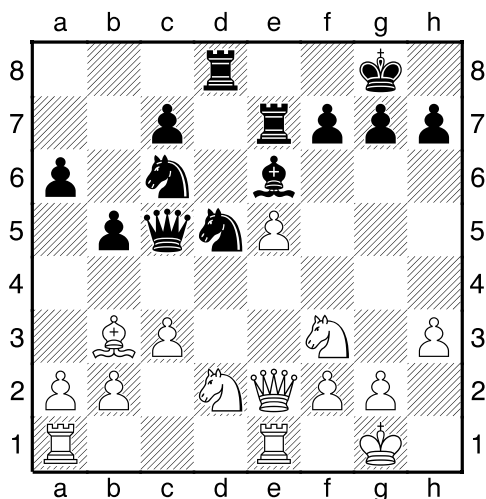


TONC 4 - Round 5 Chess tactical exercises

Find the blunder:

Which option is a blunder? Why?

1. riqhi - tooler

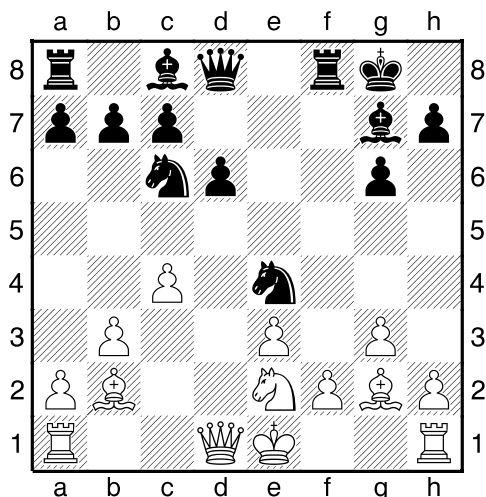


16...Red7 17.Ne4 Qe7 18.Neg5

Find the blunder:

- a) ...Nf4 b) ...h6 c) ...Na5

2. Moondance - PircAlert

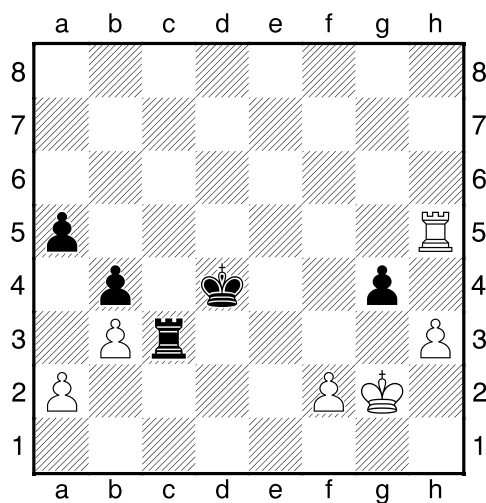


12.Qd5+ Rf7 13.Bxg7 Nxf2

Find the blunder:

- a) Rf1 b) Bc3

3. Kpeyn - Blunderer

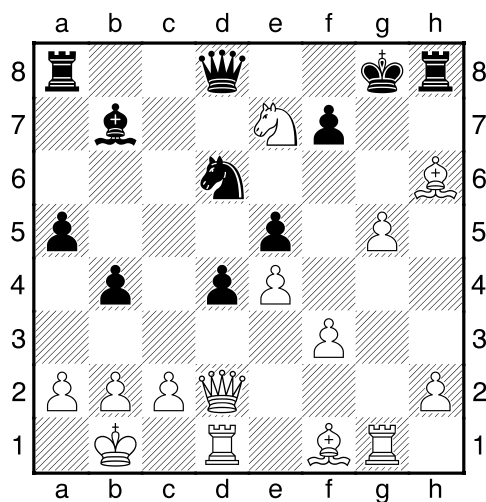


54...gxh3+ 55.Rxh3 Rc2 56.Rh4+

Find the blunder:

- a)...Kd3 b)...Kc5 c) ...Kc3

4. SirKy - RingLord



23...Qxe7 24.g6 f6 25.f4

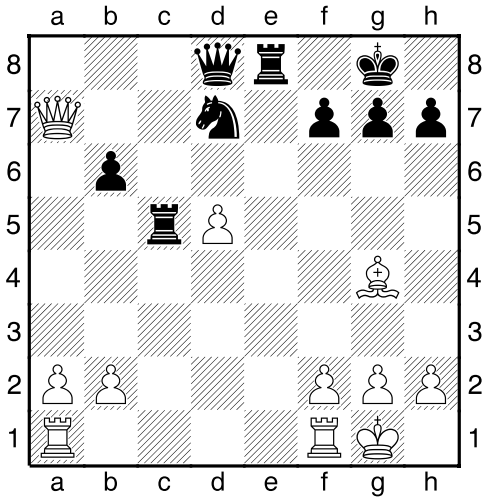
Find the blunder:

- a)...Bxe4 b)...Nxe4 c) ...b3

Find the best move:

Always look for the best move: it could be a mating line, a move that just wins a pawn, or a move that lets you keep in the game a bit more.

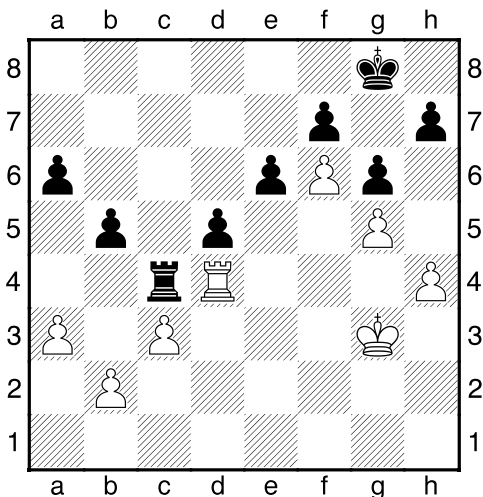
5. Aliens243 - Malackym



19...Rxd5 20.Rad1 Rxd1 21.Rxd1

Black to play

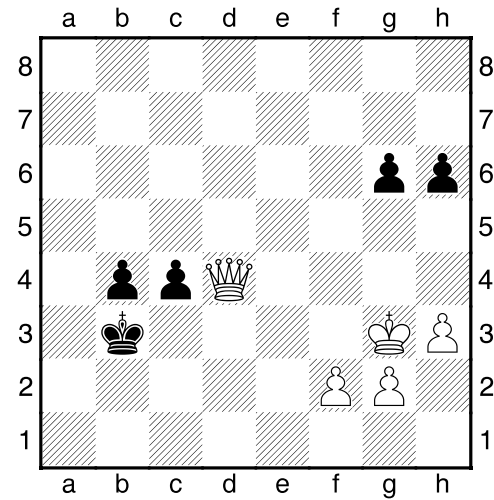
6. Aliens243 - Malackym



36.Rxc4 dxc4 37.Kf4 Kf8

White to play

7. Eduardo Lucas - Chess Fan 7



48...c3 49.Qd5+ Kb2 50.Qd4 Kb3

51.Qd3 Kb2 52.Qd4

Black to play and draw

Answers:

1.

...Nf4 is the blunder because 19.Qe4 threatens mate (20.Qxh7+), and threatens Qxc6, and also threatens Qxf4. Black can't stop all the threats.

2.

This is not obvious but 14.Rf1 is the blunder. It is to Fritz).
a long combination:

14.Rf1 Kxg7 White is down a piece and it can't take the Knight on f2 because if 15.Rxf2 Rxf2 16.Kxf2 Qf6+ threatening also the Rook on a1. The other option is better for White because: 14.Bc3 Nxh1 15.Bxh1 and White is only an exchange down (not a hole piece).

3.

56...Kc3 is the blunder since 57.Rc4+ Kb2 58.Rxc2+ Kxc2 59.f4 and Black can't stop the "f" pawn. White will queen before Black.

4.

Black seems to be already lost, but 25...Nxe4 loses immediately: 26.Bc4+ and mate is unavoidable.

5.

The only move is 21...Nf8, any other move loses immediately for Black. With 21...Nf8 White can't take the Queen because Black will mate in the next one with 22...Re1#

6.

White is a pawn down and the "e" Black pawn is a possible passer. With 38.Ke5 Whites draw the game: 38...Ke8 39.Kd6 Kd8 40.Kc6 Kc8 41.Kd6 Kd8... White is blocking the Black king and also is preventing the advance of the "e" pawn. Any other move seems to loose (according

7.

I wasn't kidding: 53...Kb3 draw the game by repetition!!!

Games with player's comments:

http://www.chessninja.com/cgi-bin/ultimatebb.cgi?ubb=get_topic;f=3;t=000217

Games in .pgn format:

<http://members.aon.at/sfischl/tonc4.pgn>

Download more chess tactical exercises from:

<http://community.corest.com/~riq/chess.html>